



USB 3.0 SATA HARD DRIVE FLAT DOCKING STATION



EC-DFLT USER MANUAL

TECHNICAL DATA

Power: DC 12V/2.0A

Operating Systems:

Windows

Mac OS X

FEATURES

- 2.5" / 3.5" SATA Hard Drive Docking Station
- USB 3.0 transfer rates up to 5Gbps
- Plug & Play, Hot Swappable
- Supports 2.5" & 3.5" SATA HDD up to 4TB

PARTS

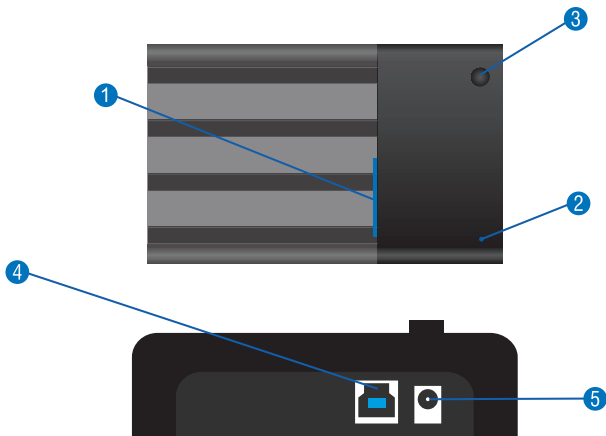
1-Hard Drive Slot

2-Power LED

3-Power Switch

4-USB 3.0 Cable Interface

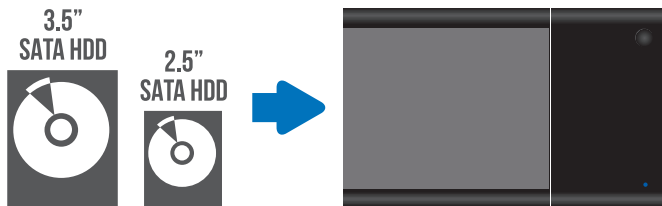
5-Power Cable Interface



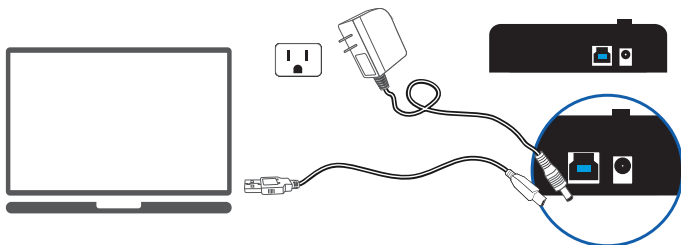
1. Check your Hard Drive to make sure it has the correct connector. This dock supports SATA only.



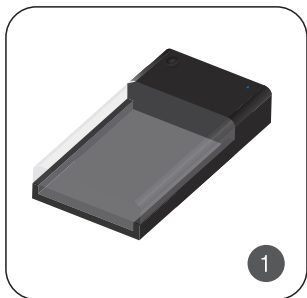
2. Insert the Hard Drive into the dock.



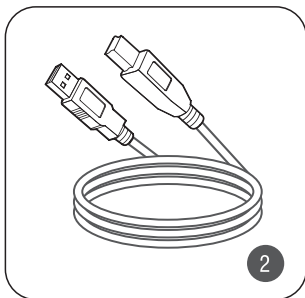
3. Next, connect the Power Adapter to a wall socket. Then, connect the USB cable from the Dock to the Computer.



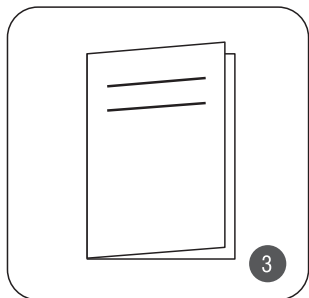
PACKAGE CONTENTS



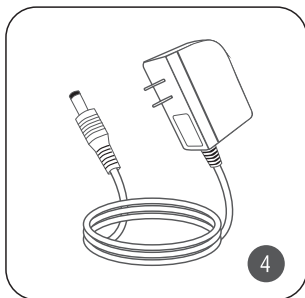
HARD DRIVE DOCK



USB 3.0 CABLE



USER MANUAL



POWER ADAPTER

DATOS TÉCNICOS

Energía: DC12V/2.0A

Sistemas operativos:

Windows

Mac OS X

CARACTERÍSTICAS

- Doking de disco duro 2.5"/ 3.5" SATA
- Velocidad de transferencia de hasta 5Gbps USB 3.0
- Plug & Play, Hot Swappable
- Compatible con discos 2.5"/ 3.5" SATA de hasta 4TB

PARTES

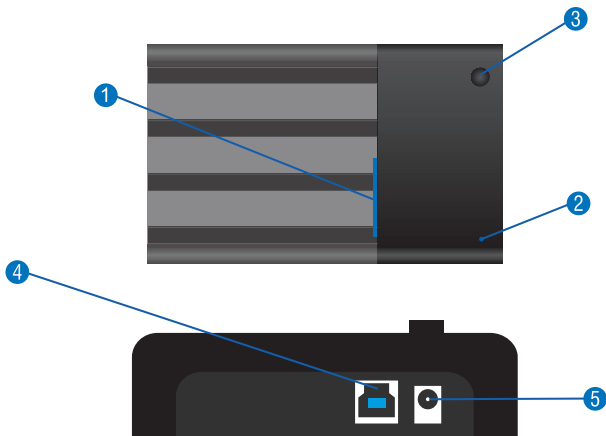
1-Slot para discos

2-Led de encendido

3-Switch de encendido

4-USB 3.0 Cable Interface

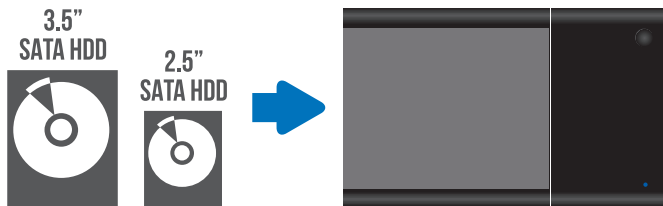
5-Entrada de cable de alimentación



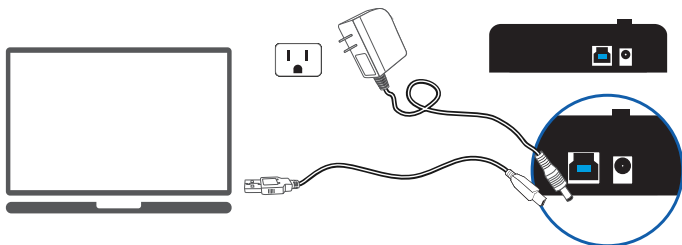
1. Compruebe su disco duro para asegurarse de que tiene el conector correcto. Este dock sólo admite SATA.

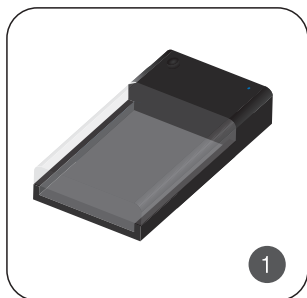


2. Inserte el disco en el dock

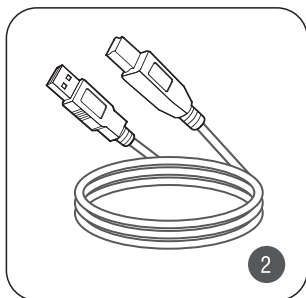


3. A continuación, conecte el adaptador de corriente a una toma de corriente. Conecte el cable USB del dock al ordenador.

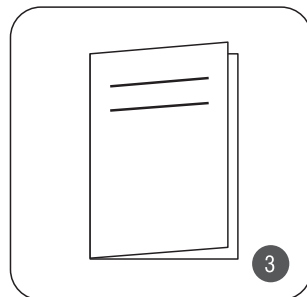


CONTENIDO DE LA CAJA

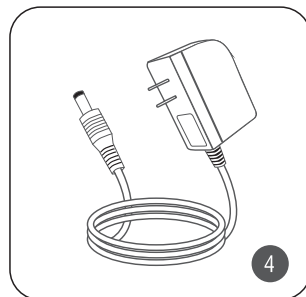
DOCK PARA DISCOS



CABLE USB 3.0



MANUAL DE USUARIO



ADAPTADOR DE CORRIENTE

DONNÉES TECHNIQUES

Puissance: C.C 12V/2.0A

Systèmes d'exploitation:

Windows

Mac OS X

FONCTIONS

- 2.5"/3.5" station d'accueil d'unité de disque dur de SATA
- Jusqu'au taux du transfert des données 5Gbps dans USB 3.0
- Prise et jeu, permutable chaud
- Appuis 2.5" et 3.5" SATA HDD jusqu'à TB4

PIÈCES

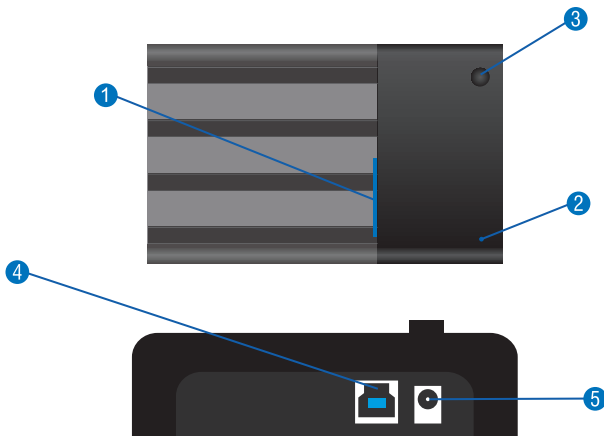
1-Fentes de disque dur

2-Puissance LED

3-Commutateur électrique

4-USB 3.0 Cable Interface

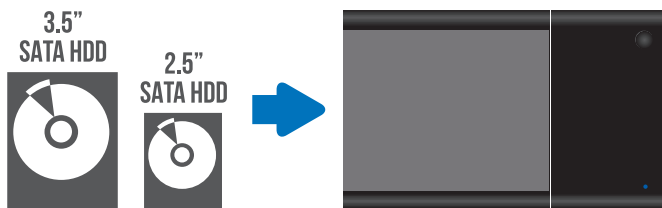
5-Interface de cable électrique



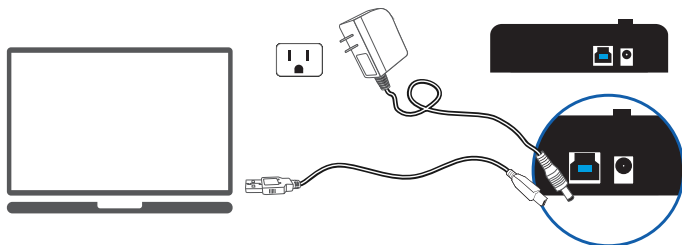
1. Vérifiez votre disque dur pour s'assurer qu'elle a le connecteur correct.
Ce dock soutient SATA seulement.



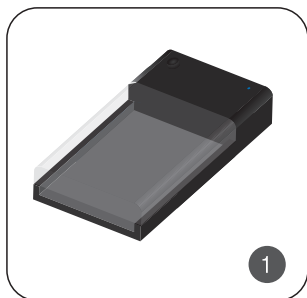
2. Insérez l'unité de disque dur dans le dock



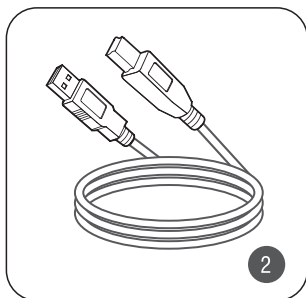
3. Après, reliez l'adaptateur de puissance à une prise murale.
Puis, reliez le câble d'USB du dock à l'ordinateur.



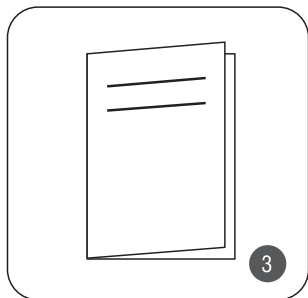
CONTENU DE L'EMBALLAGE



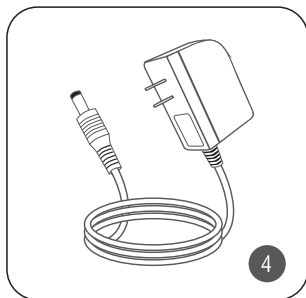
STATION QUAI



CÂBLE D'USB 3.0



MANUEL D'UTILISATION



ADAPTATEUR DE PUISSANCE

FICHA TÉCNICA

Alimentação: DC 12V/2.0A

Sistemas operacionais:

Windows

Mac OS X

FUNCIONALIDADES

- 2.5"/ 3.5" Docking Station SATA
- USB 3.0 taxas de transferência de até 5Gbps
- Plug & Play, Hot Swappable
- Compatível 2.5"/ 3.5" SATA HDD até 4TB

PARTES

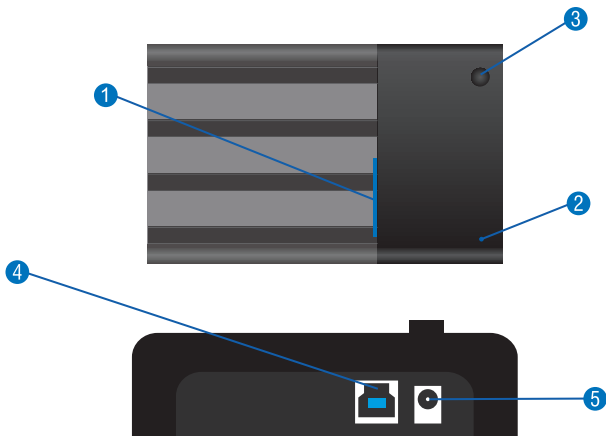
1-Slots Disco Rígido

2-LED Power

3-Switch Power

4-USB 3.0 cabo de interface

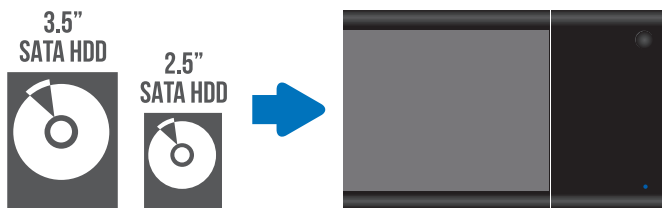
5-Cabo de Interface potência



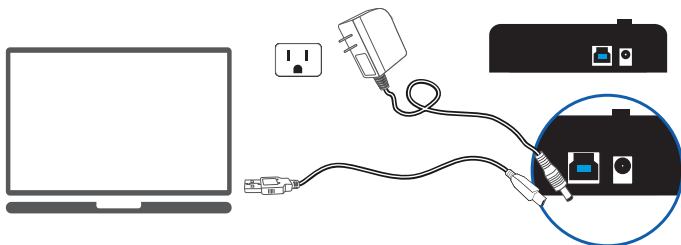
1. Verifique se o seu disco rígido para certificar-se de que tem o conector correto. Esta base suporta apenas SATA.

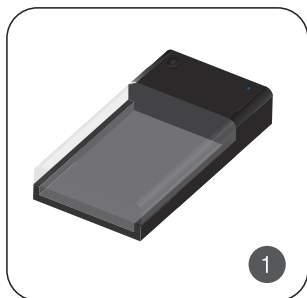


2. Insira o disco rígido para o dock

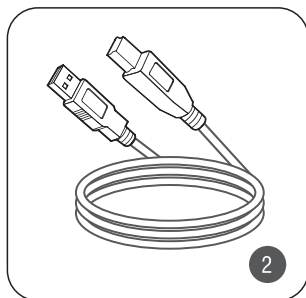


3. Em seguida, conecte o adaptador de alimentação a uma tomada de parede. Conecte o cabo USB do base ao computador.

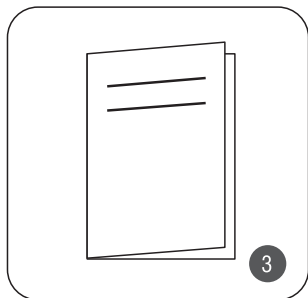


CONTENU DE L'EMBALLAGE

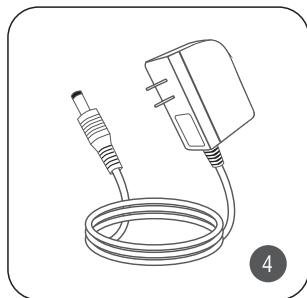
DISCO RIGIDO DOCK



CABO USB 3.0



MANUAL DO USUÁRIO



ADAPTADOR DE ENERGIA



**Please contact our Technical Support Team
for additional troubleshooting**

WWW.SABRENT.COM